

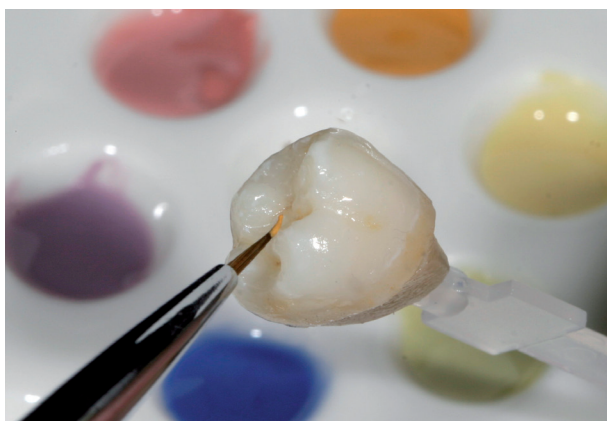
VINTAGE Art



Fluorescent porcelain stains for internal and external modifications

The ready-to-use Vintage Art paste stains impress with their microfine particle structure and ideal consistency. They exhibit excellent application properties and achieve outstanding coverage.

The stains are recommended for the internal and external shade modification of all high-fusing metal porcelains. They can also be applied on all high-fusing metal-free ceramic restorations with zirconia and alumina frameworks, CAD/CAM porcelain blocks, press porcelains and ceramic teeth.



BENEFITS

- Compatible with all high-fusing porcelains
- Easy to use paste stains
- Wide variety of intensive and effect shades
- Fluorescent glazing paste

Indications

- **Pressed all-ceramic**
Veneers, inlays/onlays, crowns/bridges
- **CAD/CAM all-ceramic**
Feldspar blanks, alumina and zirconia blanks
- **Metal-free and metal-bonded porcelains**
CTE range of 6.0 to 16.0 x 10⁻⁶K⁻¹, firing temperature approx. 880 °C

Shades

- **Base Color Stains**
9 primary and secondary shades as well as achromatic colours for the adjustment of the hue
- **Color Stains**
12 effect shades for the adjustment of all individual shades
- **Shade Stains / Foundation Shade Stains**
10 shades for surface staining of the tooth shades according to the shade group of the shade guide



VINTAGE Art - Sets and Single Components



Basic Color Set

All classical primary and secondary shades as well as shade stains for the natural colour reproduction of all restorations

- 16 shades, 3 g each: Pink, Yellow, Blue, Orange, Violet, Green, Black, White, Dark Red Brown, Orange Brown, Khaki, A-Shade, B-Shade, C-Shade, D-Shade, R-Shade
- Glazing Paste, 3 g • Vintage Art Stain Liquid, 50 ml • colour table
- instructions for use

Effect Color Set

Individual shades and Foundation Shade Stains for the reproduction of any tooth characteristics

- 15 shades, 3 g each: Gray, Blue Gray, Corn Yellow, Brown, Black Brown, Mamelon Pink, Mamelon Ivory, Rose Pink, Wine Red, Pink Orange, Foundation A-Shade, Foundation B-Shade, Foundation C-Shade, Foundation D-Shade, Foundation R-Shade
- Glazing Paste, 3 g • Vintage Art Stain Liquid, 50 ml • 1 colour table
- instructions for use

PN	Quantity	Product
6510	1 pc.	Vintage Art Basic Color Set
6511	1 pc.	Vintage Art Effect Color Set
6513	50 ml	Vintage Art Stain Liquid
6514	3 g	Glazing Paste
6515-6545	3 g	Vintage Art individual shades

Shade	PN 3 g
BASE COLOR STAINS	
P (Pink)	6515
Y (Yellow)	6516
Bl (Blue)	6517
O (Orange)	6518
V (Violet)	6519
Gr (Green)	6520
B (Black)	6521
W (White)	6522
G (Gray)	6531

Shade	PN 3 g
COLOR STAINS	
DR-Br (Dark Red Brown)	6523
O-Br (Orange Brown)	6524
Br (Brown)	6534
B-Br (Black Brown)	6535
K (Khaki)	6525
Bl-G (Blue Gray)	6532
CY (Corn Yellow)	6533
MP (Mamelon Pink)	6536
Mlv (Mamelon Ivory)	6537
RP (Rose Pink)	6538
WR (Wine Red)	6539
P-O (Pink Orange)	6540

Shade	PN 3 g
SHADE STAINS	
AS (A-Shade)	6526
BS (B-Shade)	6527
CS (C-Shade)	6528
DS (D-Shade)	6529
RS (R-Shade)	6530
F-AS (Foundation A-Shade)	6541
F-BS (Foundation B-Shade)	6542
F-CS (Foundation C-Shade)	6543
F-DS (Foundation D-Shade)	6544
F-RS (Foundation R-Shade)	6545