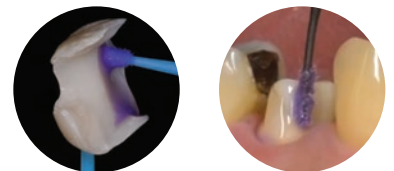


DENTAL CLEANING AGENT

**KATANA™ Cleaner**

---

For all restorative procedures  
Intra- and extra-oral use



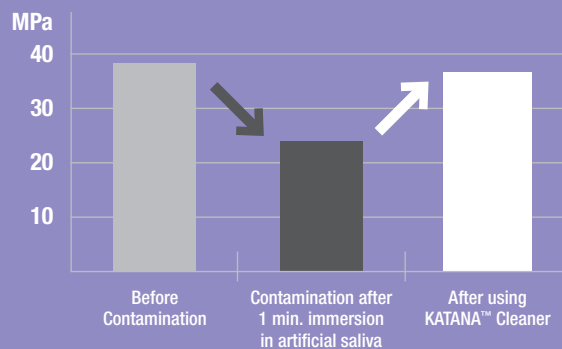
# REMOVE CONTAMINATION TO OPTIMISE YOUR ADHESIVE PROCEDURES

During trial fitting your restoration might become contaminated with proteins reducing the bond strength. KATANA™ Cleaner has a high cleaning effect due to the surface active characteristic of MDP Salt.

In contrast to other cleaners, KATANA™ Cleaner has a pH value of 4.5<sup>1</sup> which allows usage not only extra-orally but also intra-orally. It is the easy way to optimise your bondings including cementation procedures.

1. Measuring method: JIS Z 8802:2011

Shear bond strength to KATANA™ Zirconia HT



Measurement conditions:  
Substrate surface:  
After #1000 sanding, alumina sandblasting.  
Coverage area  $\phi$  5mm, measured at 37°C  
underwater storage for 1 day.

Cement: PANAVIA™ V5

Data source: Kuraray Noritake Dental Inc.

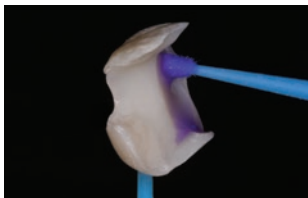
\* Numerical values vary depending on measurement conditions.



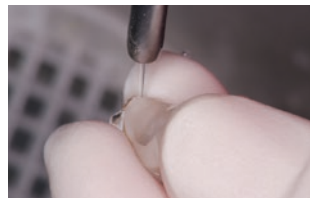
# EASY & FAST PROCEDURE



**Rub in, rinse and dry.** That's all you need to do to optimise your adhesive procedure. Unlike other cleaners that require longer rubbing time, and are limited to extra-oral use only, **KATANA™ Cleaner only requires 10 seconds and can be used both intra- and extra-orally.**



Apply and rub KATANA™ Cleaner for at least 10 seconds. Both to the prosthetic and the intra-oral substrate.



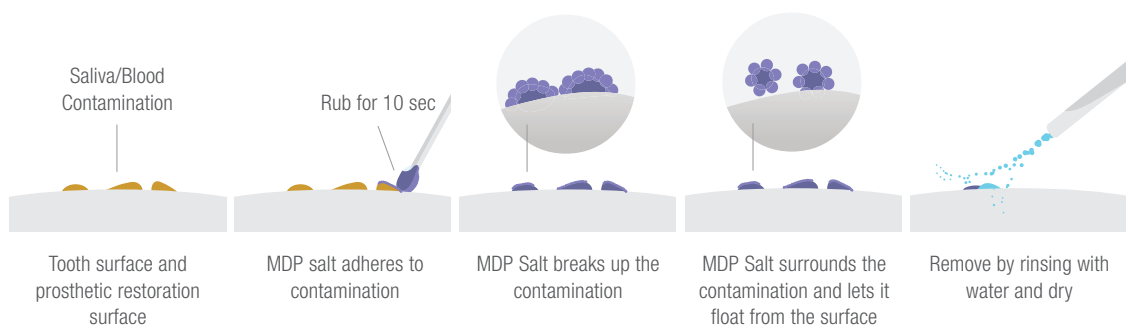
Rinse and dry.



Cement the restoration according to the manufacturer instructions.

Pictures courtesy of Dr. Shoji Kato

## HOW IT WORKS



# WIDE INDICATION RANGE: INTRA-ORAL AND EXTRA-ORAL

Due to its mild pH value of 4.5, KATANA™ Cleaner can be used not only extra-orally but also intra-orally, making it an all-purpose universal cleaner for both - tooth structure and prosthetics.



## Intra-oral:

Cavity, Abutment, Root Canal



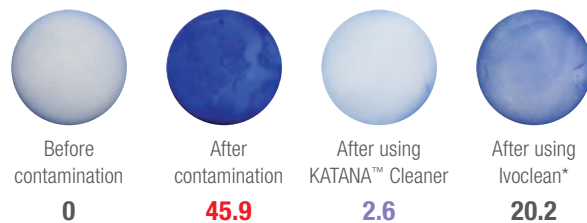
## Prosthetics:

Ceramics (Zirconia, Lithium Disilicate, Dental Porcelain)  
Resin Based Materials (CAD/CAM Crowns, Composite Resin)  
Metals (Precious/Non Precious Metal Alloys)  
Posts (Glass Fiber Posts, Metal Posts)

## PROTEIN STAINING TEST CLEANING EFFECT ON ZIRCONIA

### Contamination with artificial saliva

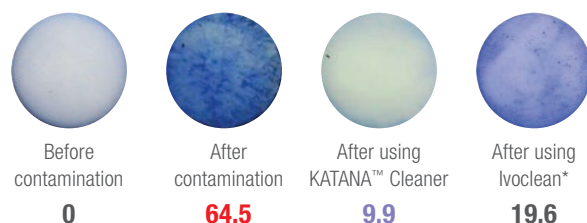
Contamination assessment based on the degree of staining with a stain that binds to proteins present in saliva.



### Contamination with blood (human plasma)

The degree of contamination is evaluated by the degree of staining with an agent that binds to (albumin, fibrinogen, immunoglobulin) proteins present in human plasma.

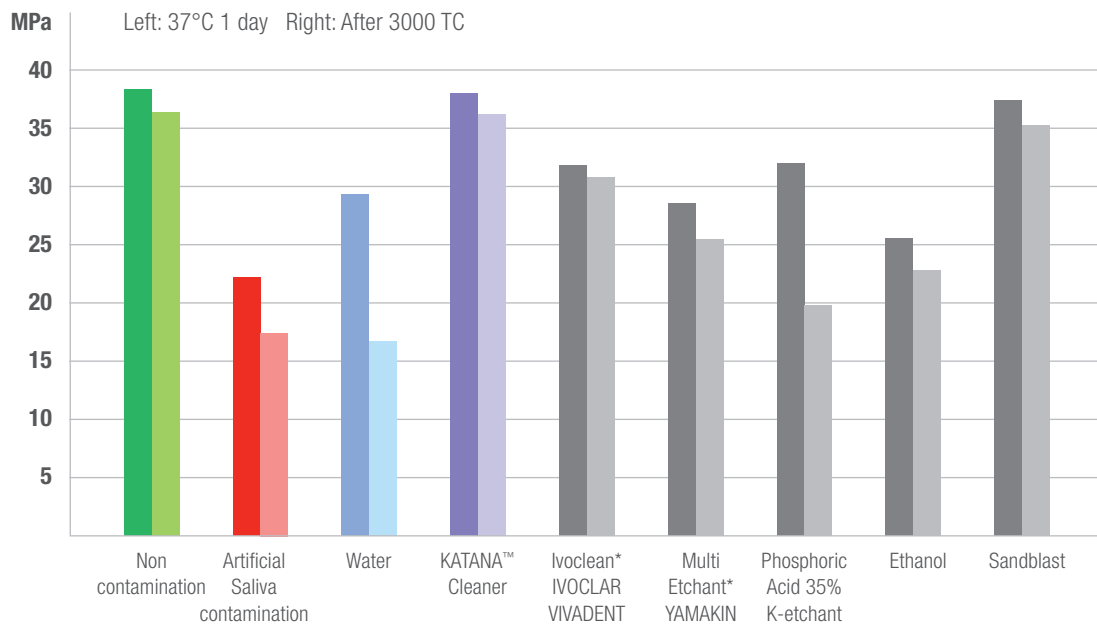
Data source: Kuraray Noritake Dental Inc.



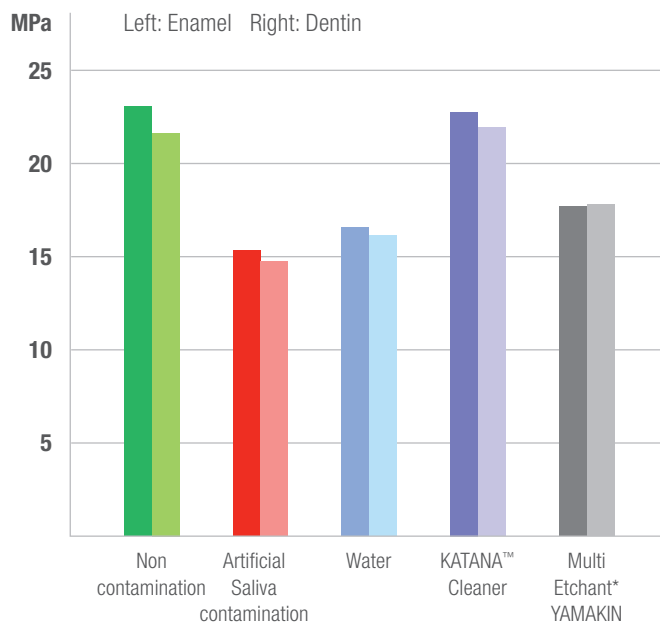
## HIGH CLEANING EFFECT

During intra-oral try-in of restorations, contamination might occur reducing the bond strength. KATANA™ Cleaner's high cleaning effectiveness ensures for an optimised bonding surface.

Shear bond strength to KATANA™ Zirconia HT after cleaning with:



Shear bond strength to bovine enamel and dentin after cleaning with:



Cement: PANAVIA™ V5  
 Data courtesy of Dr. Shoji Kato, The 38th Annual Meeting of Japan Society for Adhesive Dentistry  
 Effect of various surface cleaning procedures on bonding performance  
 \* Not a trademark of Kuraray Noritake Dental Inc.

## CLEANERS COMPARISON\*

	KATANA™ CLEANER	IVOCLEAN** (IVOCLAR VIVADENT)	ZIRCLEAN** (BISCO)
Intra-oral Use on Tooth Structure	Yes	No	No
Intra-oral Use on Implant Abutments	Yes	No	No
Extra-oral Use	Yes	Yes	Yes
Active Ingredient	MDP Salt (Surfactant)	Sodium Hydroxide	Potassium Hydroxide
pH	4.5	13-13.5	13
Application Time	10 Seconds	20 Seconds	20 Seconds
Handling	No Shaking	Shake Before Use	No Shaking

\* According to the Instructions for Use and official documentation  
 \*\* Not a trademark of Kuraray Noritake Dental Inc.

SINGLE-  
HANDED  
FLIP TOP  
CAP



## ORDERING INFORMATION

ARTICLE NUMBER	DESCRIPTION
#3970-EU	KATANA™ Cleaner (4.0ml)

### YOUR IDEAL TEAMMATES:



#### PANAVIA™ V5

PANAVIA™ V5 is our strongest cement ever developed. And with five shades, our most esthetic one too. This makes a totally new kind of dentistry possible, where you can be confident during cementation.

#### PANAVIA™ SA CEMENT UNIVERSAL

PANAVIA™ SA Cement Universal contains the unique LCSi monomer that adheres to virtually every material including glass ceramics without the need for a separate primer. The original MDP monomer allows for chemical reactivity with zirconia, dentin and enamel.





EU Importer

## Kuraray Europe GmbH

Philipp-Reis-Strasse 4,  
65795 Hattersheim am Main, Germany

Phone +49 (0)69 305 35 835

Fax +49 (0)69 305 98 35 835

[www.kuraraynoritake.eu](http://www.kuraraynoritake.eu)

[centralmarketing@kuraray.com](mailto:centralmarketing@kuraray.com)

- Before using this product, be sure to read the Instructions for Use supplied with the product.
- The specifications and appearance of the product are subject to change without notice.
- Printed color can be slightly different from actual color.

"KATANA" is a trademark of NORITAKE CO., LIMITED

"PANAVIA" is a trademark of KURARAY CO., LTD.



### Kuraray Noritake Dental Inc.

1621 Sakazu, Kurashiki, Okayama 710-0801, Japan  
Website [www.kuraraynoritake.com](http://www.kuraraynoritake.com)

